


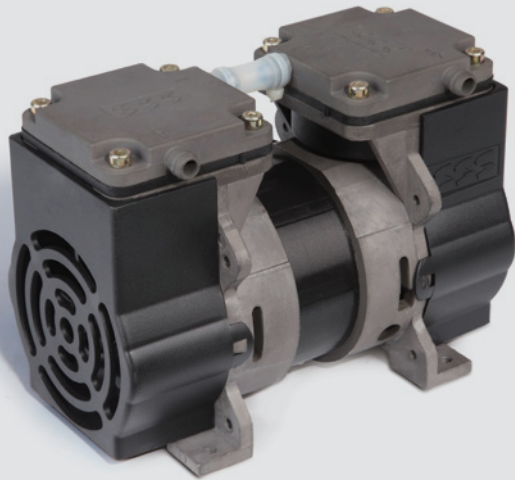




+1 (920) 234 5113 
 +852 2635 2285 
 +52 1 (442) 343 3172 
 email: info@gseint.com
 web: www.gseint.com

Twin-Headed Rocking Piston

ZW90



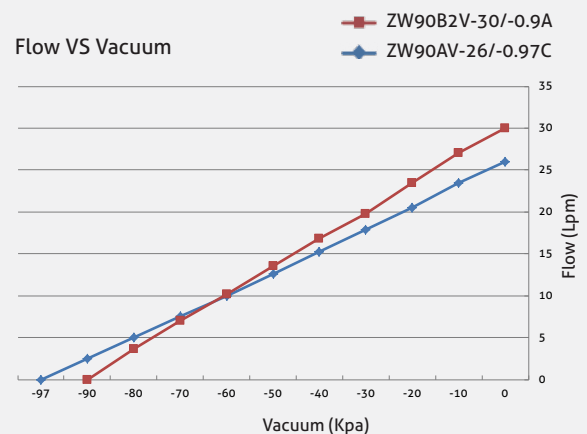
Max. Flow **1.7 cfm (26 lpm)**
 Max. Vacuum **28.6" Hg (-970 mbar)**

- Permanently lubricated bearings
- Oil-less, non-lubricated cup and cylinder
- Long-life cup design
- Thin wall cylinder for good heat transfer
- Stainless-steel valves
- Capacitor as standard
- Field service ability
- Recoverable thermally protected motor
- Other voltages and configurations available upon request

Specification

Model Number	ZW90AV-26/-0.97C	ZW90B2V-30/-0.9A
Open Flow	0.92 cfm (26 lpm)	1.06 cfm (30 lpm)
Max. Continuous Vacuum	28.6" Hg (-970 mbar)	26.6" Hg (-900 mbar)
Current At Rated Load	0.6A	1.3A
Power At Rated Load	110W	140W
Motor Type	PSC	PSC
Voltage/Frequency	110V/60Hz	110V/60Hz
Net Weight	7.7 lbs (3.5kg)	7.7 lbs (3.5kg)

Performance Chart



The information presented in this material is based on technical data and test results of nominal units. It is believed to be accurate and reliable and is offered as an aid to help in the selection of GSE products. It is the responsibility of the user to determine the suitability of the product for their intended use and the user assumes all risk and liability whatsoever in connection therewith. GSE does not warrant, guarantee or assume any obligation or liability in connection with this information.

Technical Drawings

